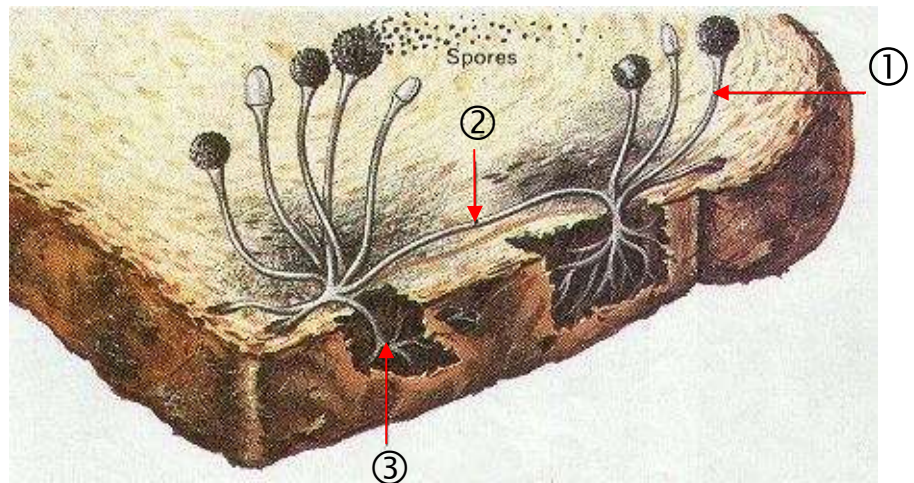


Write the answers on your own paper, not on this sheet.

1. How do fungi digest their food?
2. How do all fungi reproduce?
3. What is a mycelium?
4. What are the thin strands that make up a mycelium called?
5. Which part of a mushroom is the main part of the fungus: the cap or the mycelium?
6. What is the difference between septate and non-septate hyphae?
7. What is the difference between a rhizoid hypha and an aerial hypha?
8. Matching: Identify each numbered part:

- a. Stolon ____
- b. Sporophore ____
- c. Rhizoid hypha ____



9. What is a haustorium?
10. What chemical makes fungi tough and flexible?
11. List three types of fungi that are found in Phylum Basidiomycota.
12. What is a basidia?
13. Where will you find the basidia on a mushroom?
14. Write the letters for the steps of the life cycle of a mushroom in **correct order**:
 - A. Mycelia fuse together and exchange DNA.
 - B. Hyphae fill with water and the mushroom pops out of the ground.
 - C. Mycelia grow from spores.
 - D. The cycle starts all over when spores from the gills fall on the ground.
 - E. Mycelia grow quickly and form a button.
15. Puffballs and mushrooms are saprophytic. What does "saprophytic" mean?
16. If the mycelia of a shelf fungus grow inside the cells of a living tree, is it saprophytic or parasitic?
17. What are rusts and smuts?

1. What are asci?
2. List the names of three types of fungi in Phylum Ascomycota.
3. How do yeasts reproduce?
4. What do some yeasts store in their vacuoles?
5. What is fermentation?
6. What gas do yeast give off when they ferment?
7. One type of Ascomycota is a truffle. What animals are used to hunt for truffles? What are truffles used for? (Google this.)
8. Name three conditions or diseases caused by fungi.
9. What is a zygote?
10. List three ways that bread mold reproduce.
11. Chytrids are fungi that live in muddy or watery areas. What do chytrid spores have that other fungi don't have?
12. What is an imperfect fungus?
13. What is the fungus *Penicillium* used to make?
14. What is an antibiotic?
15. Why do some scientists place slime molds in Kingdom Protista?
16. What two organisms make a lichen? Do they have a mutualistic, commensalistic, or parasitic relationship?
17. How do lichens reproduce?
18. What do mycorrhiza do for plants?

19. Name the phylum for each fungus:

a. Mushroom



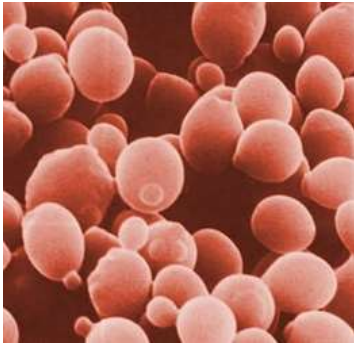
b. Morel



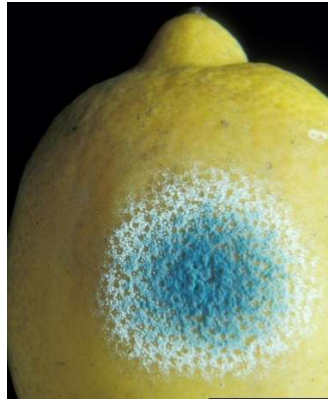
c. Shelf fungus



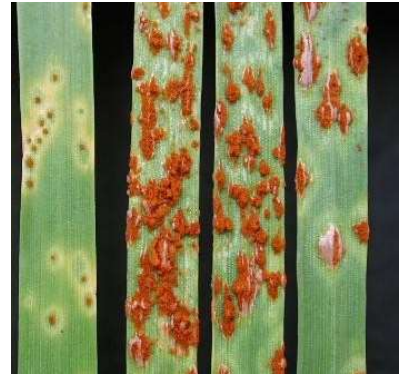
d. Yeast



e. Penicillium



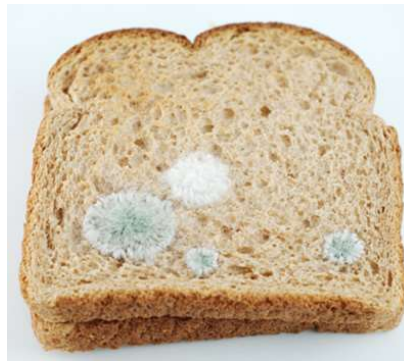
f. Wheat rust



g. Slime mold



h. Bread mold



i. Chytrids

